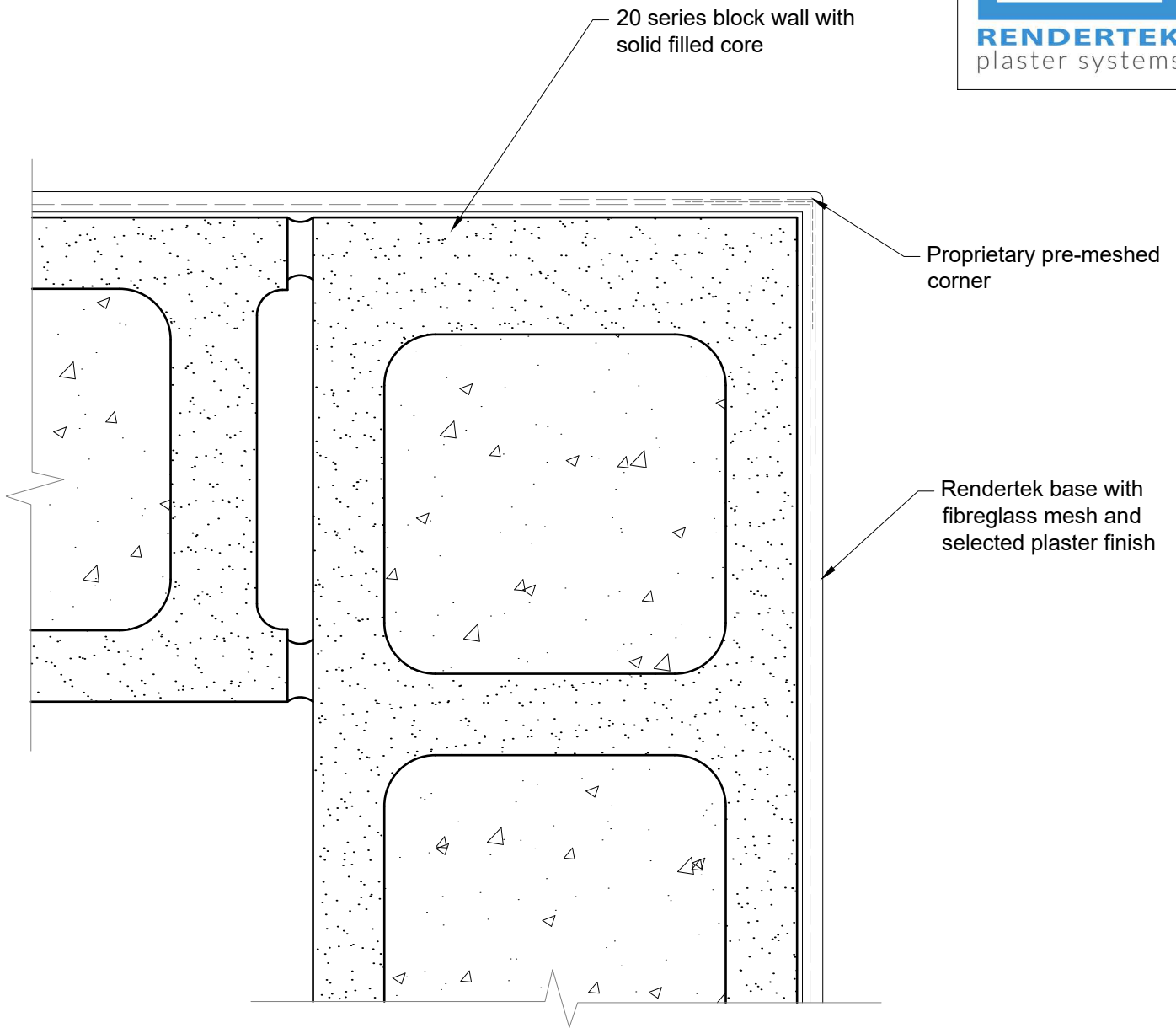


## INTERNAL CORNER

CAD REF 20-315-R01

SCALE 1:2.5

Rendertek Plaster Masonry Details  
Issue Date: Dec 2020



20 series block wall with solid filled core

Proprietary pre-meshed corner

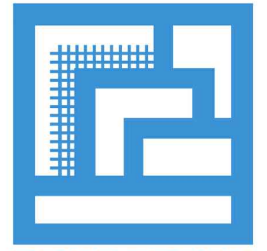
Rendertek base with fibreglass mesh and selected plaster finish

## EXTERNAL CORNER

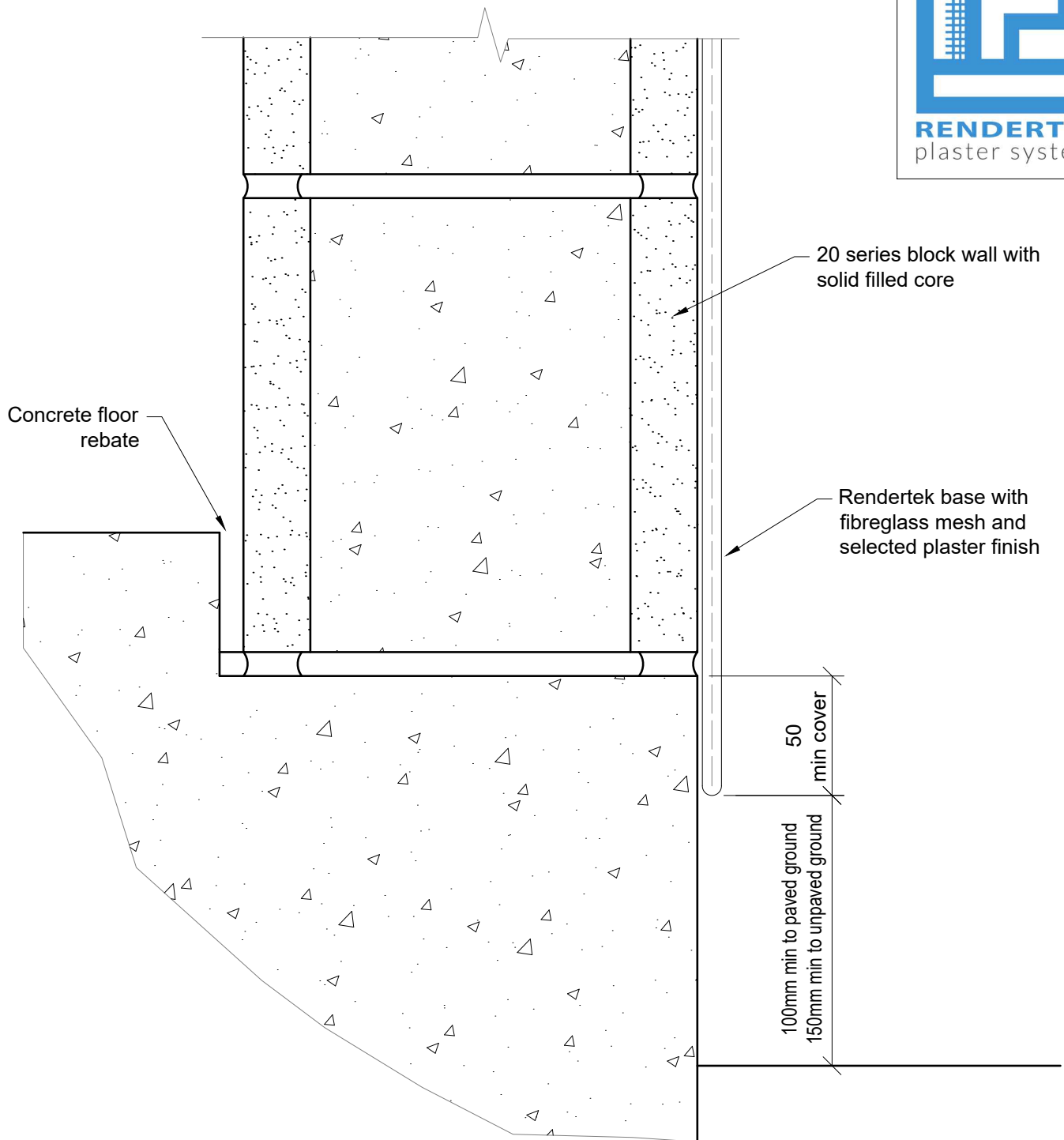
CAD REF 20-315-R02

SCALE 1:2.5

Rendertek Plaster Masonry Details  
Issue Date: Dec 2020



**RENDERTEK**  
plaster systems

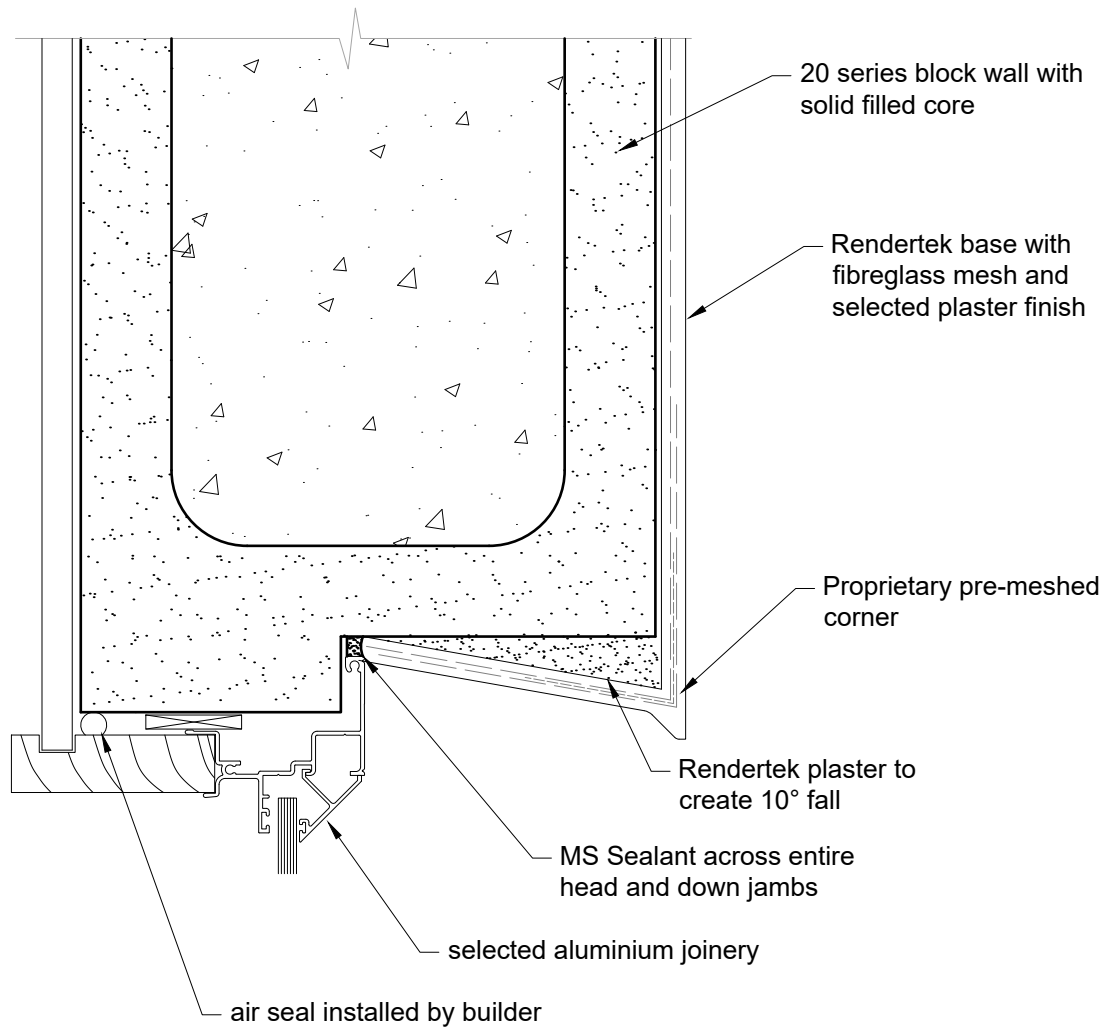


### FOOTING DETAIL

CAD REF 20-315-R03

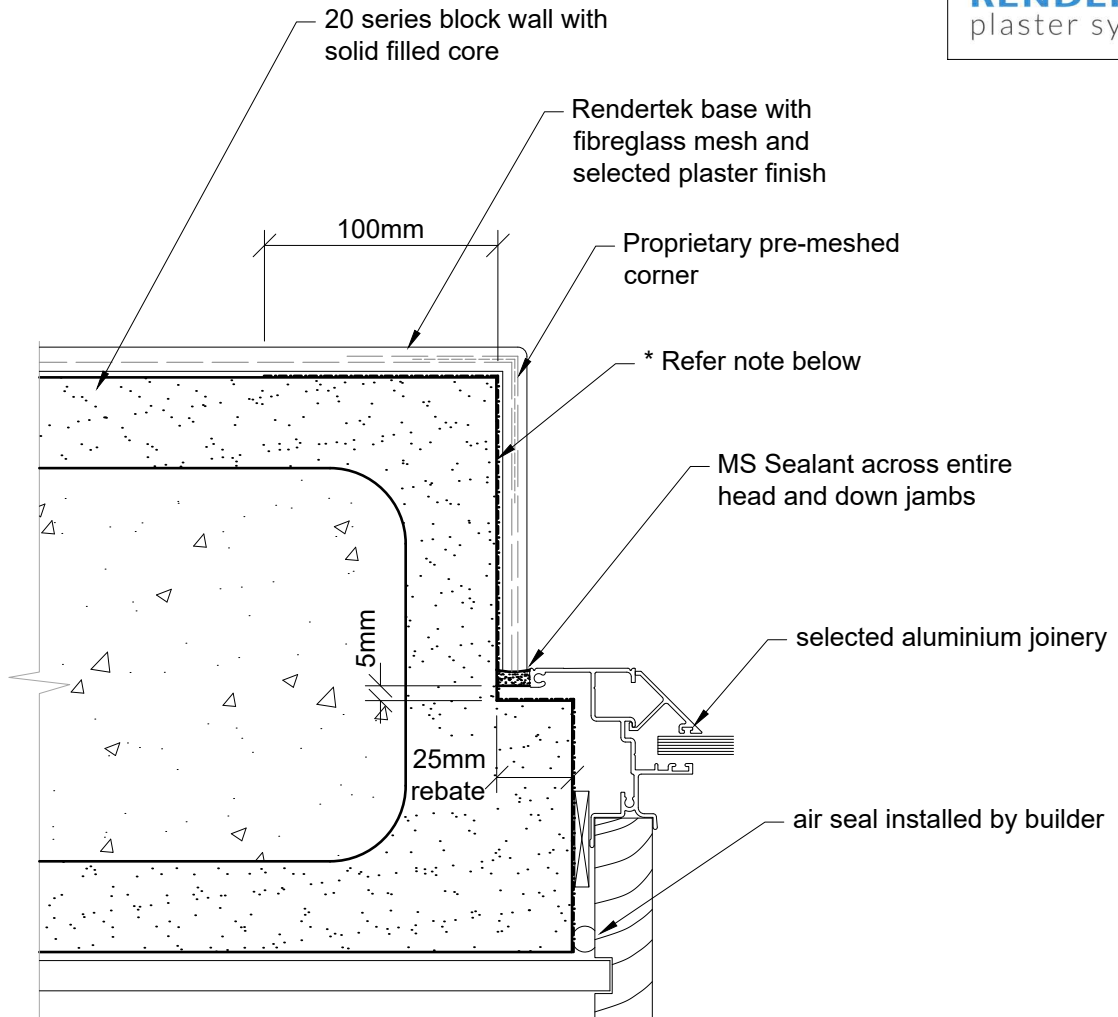
SCALE 1:2.5

Rendertek Plaster Masonry Details  
Issue Date: Dec 2020



## WINDOW HEAD DETAIL

CAD REF 20-315-R04  
SCALE 1:2.5

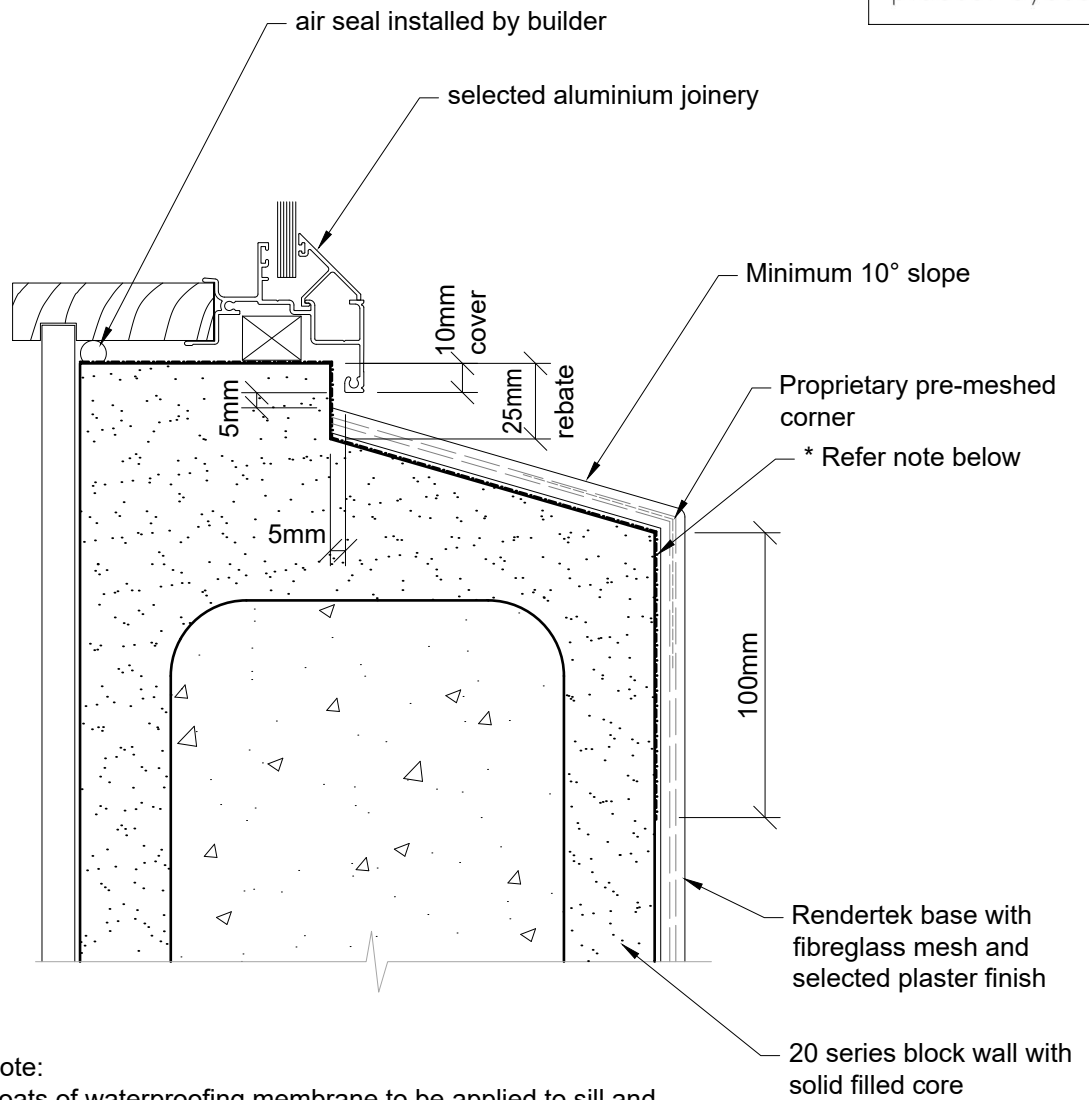


**\* Note:**  
2 coats of waterproofing membrane to be applied to sill and jamb reveals prior to window installation.  
Minimum of 100mm cover down and around the front edges.

## WINDOW JAMB DETAIL

CAD REF 20-315-R05  
SCALE 1:2.5

Rendertek Plaster Masonry Details  
Issue Date: Dec 2020



\* Note:  
2 coats of waterproofing membrane to be applied to sill and jamb reveals prior to window installation.  
Minimum of 100mm cover down and around the front edges.

## WINDOW SILL DETAIL

CAD REF 20-315-R06  
SCALE 1:2.5

Rendertek Plaster Masonry Details  
Issue Date: Dec 2020